


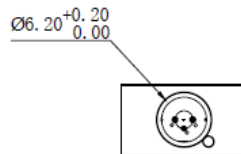
635nm~638nm 80mW~90mW SM Fiber Coupled Laser Diode with SMF-28 Fiber
635nm Coaxial Pigtailed LD with 9um Fiber (SM Fiber)
RWLP-635-080m-9

635nm Pigtailed Diode Laser		80mW/9um Fiber	
PARAMETER	SYMBOL	VALUE	UNIT
Reverse Voltage	V_r	2.0	V
Operating Temperature	T_{op}	-10~+60	°C
Storage Temperature	T_{stg}	-40~+85	°C
Lead soldering temperature (10 sec.)	T_{is}	260	°C
Features: <ul style="list-style-type: none"> ● 635nm ● 9um Fiber ● Coaxial or B82 Package 			
Applications: <ul style="list-style-type: none"> ● Medical Laser Treatment ● Aiming Beam ● Others 			
Specifications	RWLP-635-080m-9		
	Min	Type	Max
Center Wavelength@25°C	630nm	638nm	645nm
Recommended work Temperature	25°C		
Output Power	----	80mW	----
Fiber Type	SMF-28		
Fiber Core	9um		
Monitor Current	----	----	----
PD Reverse Voltage	----	----	----
Fiber Connector	FC/SC/SMA905		
Fiber Length	----	80cm	100cm
Threshold Current (Typ.)	----	65mA	95mA
Operating Current (Typ.)	----	220mA	240mA
Operating Voltage	----	2.8V	3.5V
Package Style	Coaxial or B82		

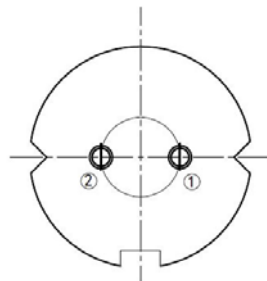
Coaxial Package View: (Part Number: RWLP-635-080m-9)



B82 Package View: (Part Number: RWLP-635-080m-9-B)



PIN Bottom View:



1	LD(+)
2	LD(-)

Electrically shorten LD module and store in non-extreme conditions.
Suggest using the constant current power supply.

