


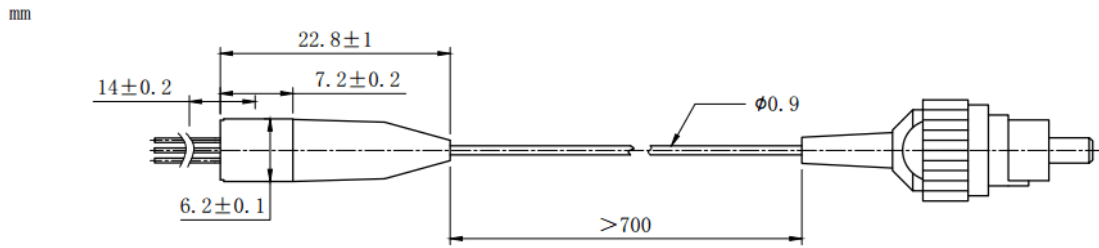
1570nm 2mW~3mW DFB Coaxial Pigtailed Laser Diode with 9um SMF | Built-in Isolator

1570nm SM Fiber Coupled LD with Single Mode Fiber (SM Fiber) | Built-in PD

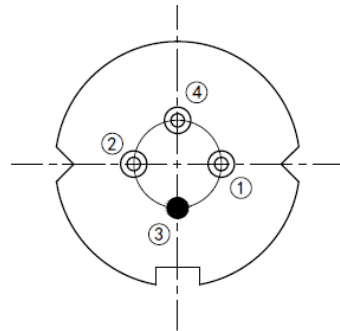
RWLP-1570-002m-9-DFB-ISO

PARAMETER	SYMBOL	VALUE	UNIT
LD Reverse Voltage	V_r	2.0	V
PD Reverse Voltage	$V_{r(PD)}$	15	V
Operating Temperature	T_{op}	-40 ~ +85	°C
Storage Temperature	T_{stg}	-40 ~ +100	°C
Lead soldering temperature (10 sec.)	T_{is}	260	°C
Features: <ul style="list-style-type: none"> ● 1570nm ● DFB Laser Diode ● Built-in Photodiodes ● 9um SM Fiber ● Built-in Isolator ● Coaxial/Receptacle Package 			
Applications: <ul style="list-style-type: none"> ● Test Equipments ● Optical Transmitter of Analog Signal ● Optical Transmitter of Data Signal 			
Specifications		RWLP-1570-002m-9-DFB-ISO	
		Min	Type
Center Wavelength@25°C		±3nm	1570nm
Laser Type		DFB	
Output Power		----	2mW
Fiber Core		9um SM Fiber	
Threshold Current (Typ.) I_{th}		----	5mA
Operating Current		----	30mA
Operating Voltage		----	1.4V
Spectral Width (FWHM)		----	0.3nm
SMSR		----	35dB
Monitor Current		0.1mA	----
PD Capacitance		----	10pF
PD Dark Current		----	0.1uA
Optical Isolation		----	30dB
Package Style		Pigtail (Receptacle Optional)	
Recommended Operation Temperature		25°C	
Connector		FC/SC/SMA905	

Coaxial Package View:



Pin Bottom View (A-Type):



PIN 1	PD (+)
PIN 2	LD (-)
PIN 3	LD (+), CASE
PIN 4	PD (-)

Electrically shorten LD module and store in non-extreme conditions.

Suggest using the constant current power supply.

