
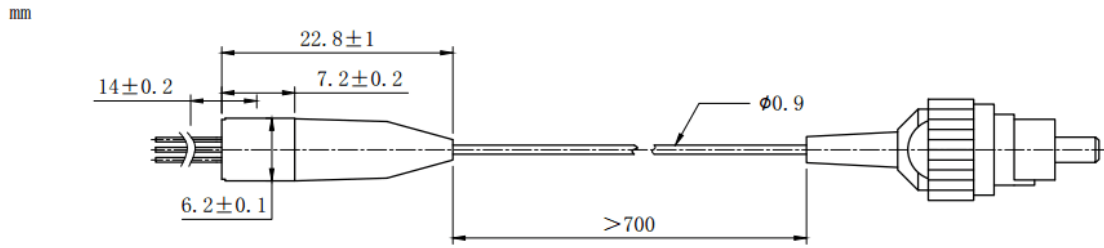


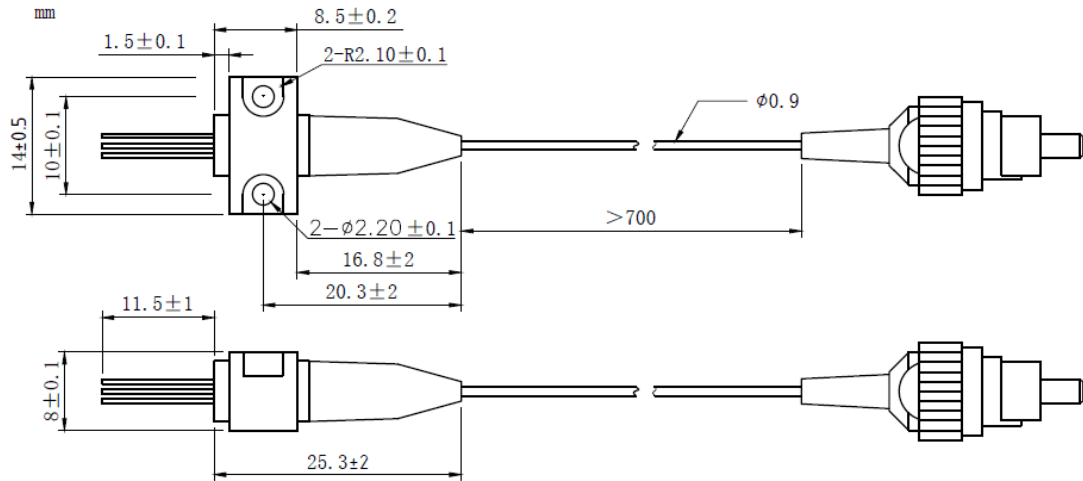
**1310nm 5mW DFB Coaxial Pigtailed Laser Diode with 9um SMF | Built-in Isolator**  
**1310nm SM Fiber Coupled LD with Single Mode Fiber (SM Fiber) | Built-in PD**  
**RWLP-1310-005m-9-DFB-ISO**

PARAMETER	SYMBOL	VALUE	UNIT
LD Reverse Voltage	$V_r$	2.0	V
PD Reverse Voltage	$V_{r(PD)}$	15	V
Operating Temperature	$T_{op}$	-20 ~ +50	°C
Storage Temperature	$T_{stg}$	-40 ~ +100	°C
Lead soldering temperature (10 sec.)	$T_{is}$	260	°C
<b>Features:</b> <ul style="list-style-type: none"> <li>• 1310nm</li> <li>• DFB Laser Diode</li> <li>• Built-in Photodiodes</li> <li>• 9um SM Fiber</li> <li>• Built-in Isolator</li> <li>• Coaxial or B85 Package</li> </ul>			
<b>Applications:</b> <ul style="list-style-type: none"> <li>• Test Equipments</li> <li>• Optical Transmitter of Analog Signal</li> <li>• Optical Transmitter of Data Signal</li> </ul>			
<b>Specifications</b>		<b>RWLP-1310-005m-9-DFB-ISO</b>	
		<b>Min</b>	<b>Type</b>
		<b>Max</b>	
Center Wavelength@25°C		±3nm	1310nm
		±10nm	
Laser Type		DFB	
Output Power		5mW	
Fiber Core		9um SM Fiber	
Threshold Current (Typ.) $I_{th}$		5mA	15mA
Operating Current		60mA	70mA
Operating Voltage		1.4V	1.7V
Spectral Width (FWHM)		0.3nm	1nm
SMSR		35dB	
Monitor Current		0.1mA	
PD Capacitance		10pF	20pF
PD Dark Current			0.1uA
Optical Isolation		30dB	
Package Style		Coaxial or B85	
Recommended Operation Temperature		25°C	
Connector		FC/SC/SMA905	

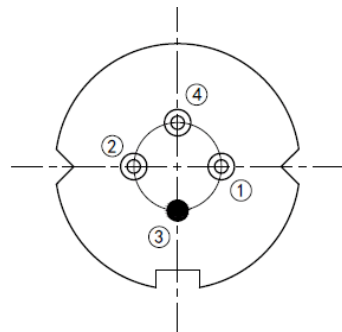
**Coaxial Package View: (Part Number: RWLP-1310-005m-9-DFB-ISO)**



**B85 Package View: (Part Number: RWLP-1310-005m-9-B-DFB-ISO)**



**Bottom View: (A-Type)**



PIN 1	PD(+)
PIN 2	LD(-)
PIN 3	LD(+), CASE
PIN 4	PD(-)

Electrically shorten LD module and store in non-extreme conditions.

Suggest using the constant current power supply.

