


1270nm 10mW DFB Coaxial Pigtailed Laser Diode with 9um SMF | Built-in Isolator
1270nm SM Fiber Coupled LD with Single Mode Fiber (SM Fiber) | Built-in PD
RWLP-1270-010m-9-DFB-ISO

PARAMETER	SYMBOL	VALUE	UNIT
LD Reverse Voltage	V_r	2.0	V
PD Reverse Voltage	$V_{r(PD)}$	15	V
Operating Temperature	T_{op}	-20 ~ +50	°C
Storage Temperature	T_{stg}	-40 ~ +100	°C
Lead soldering temperature (10 sec.)	T_{is}	260	°C
Features: <ul style="list-style-type: none"> • 1270nm • DFB Laser Diode • Built-in Photodiodes • 9um SM Fiber • Built-in Isolator • Coaxial or B85 Package 			
Applications: <ul style="list-style-type: none"> • Test Equipments • Optical Transmitter of Analog Signal • Optical Transmitter of Data Signal 			
Specifications		RWLP-1270-010m-9-DFB-ISO	
		Min	Type
		Max	
Center Wavelength@25°C		±3nm	1270nm
			±10nm
Laser Type		DFB	
Output Power		----	10mW

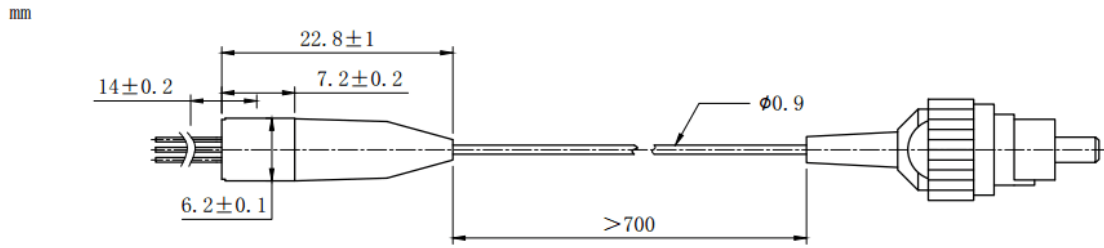
Fiber Core		9um SM Fiber	
Threshold Current (Typ.) I_{th}		----	5mA
			15mA
Operating Current		----	90mA
			100mA
Operating Voltage		----	1.4V
			1.7V
Spectral Width (FWHM)		----	0.3nm
			1nm
SMSR		----	35dB

Monitor Current		0.1mA	----

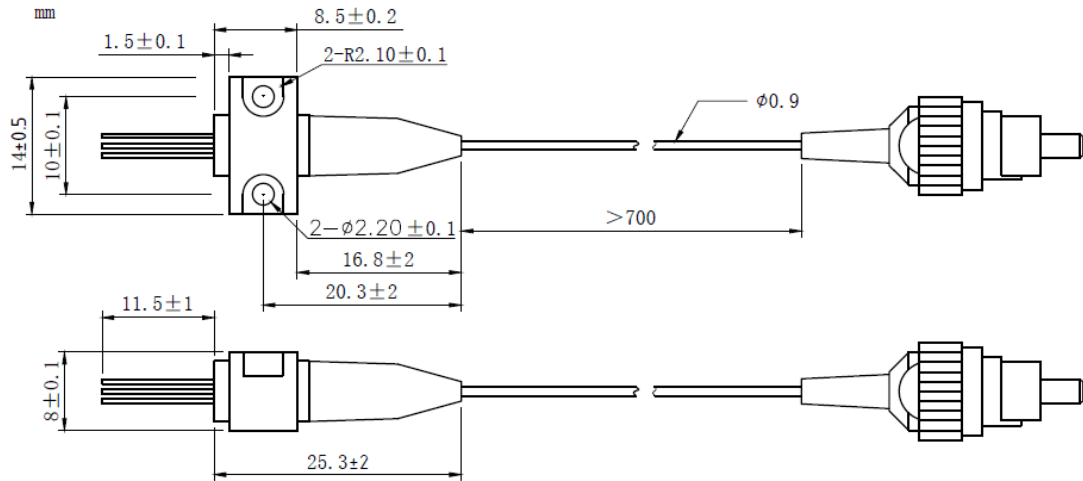
PD Capacitance		----	10pF
			20pF
PD Dark Current		----	----
			0.1uA
Optical Isolation		----	30dB

Package Style		Coaxial or B85	
Recommended Operation Temperature		25°C	
Connector		FC/SC/SMA905	

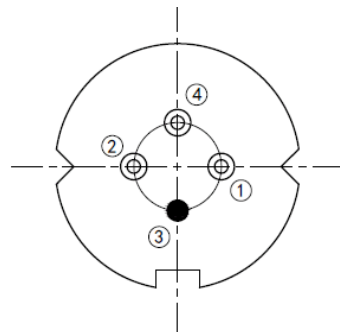
Coaxial Package View: (Part Number: RWLP-1270-010m-9-DFB-ISO)



B85 Package View: (Part Number: RWLP-1270-010m-9-B-DFB-ISO)



Bottom View: (A-Type)



PIN 1	PD(+)
PIN 2	LD(-)
PIN 3	LD(+), CASE
PIN 4	PD(-)